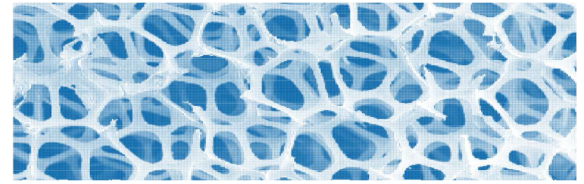


FXI Reticulated Foams

Product Sheet

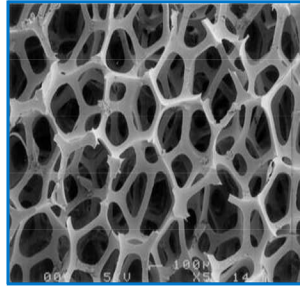


100% Open Cell Flexible Polyurethane Foams

FXI pioneered the development and use of reticulated foams across multiple industries including Automotive, Electronics, Bedding, Industrial, & Healthcare!



Non Reticulated Foam



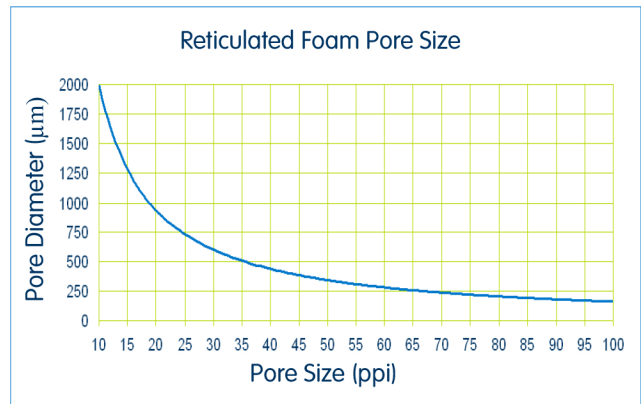
Reticulated Foam

Available to meet a variety of OEM and Tier Specs including:

- ES-5F13-9601-AA
- WSSM2D498A
- WSSM2D224B
- MSAY332A
- HES C206
- WSSM2D500A1
- HES C206
- JCI TQPM-PLUS-SP040713E
- Visteon VAMPUPE Filter
- Delphi M50115
- Tennex TNX-P-016-95

FXI can design 100% open cell foam with a variety of options:

- Pore size / Pressure Drop
- Density
- Stiffness
- Biocide



Typical applications include:

- Filters
- Spacers for ventilated seats
- Debris Screens

This product data sheet is considered to be an uncontrolled document outside FXI. As such, this sheet is subject to revision without notification. Test standards specified in SI (Metric) Units only. Values indicated here are both SI (Metric) and English Units using appropriate conversion factors and rounding off where expedient. IMPORTANT NOTICE REGARDING FLAMMABILITY – All polyurethane foams including combustion modified foams will burn and generate smoke and gases. Performance conditions and corresponding data refer to typical performance in specific tests, such as UL-94 and MVSS-302, and should not be construed to imply the behavior of this or any other product under the other fire conditions. All data regarding these products were obtained using specific test methods under controlled laboratory conditions intended to measure performance against specifications. Due to the great number and variety of applications for which FXI products are purchased, FXI does not recommend specific applications or assume any responsibility for use results obtained or suitability for specific applications. FXI warrants its products only to direct buyers. (See FXI's Standard Terms of Sales for FXI's warranty.) IN NO EVENT SHALL FXI BE RESPONSIBLE FOR ANY CLAIM IN EXCESS OF FXI'S SLE PRICE OF THE PRODUCT TO WHICH THE CLAIM RELATES. © FXI All rights reserved.

FXI Automotive Product Innovations

(248) 553-1039 | fxi.com

